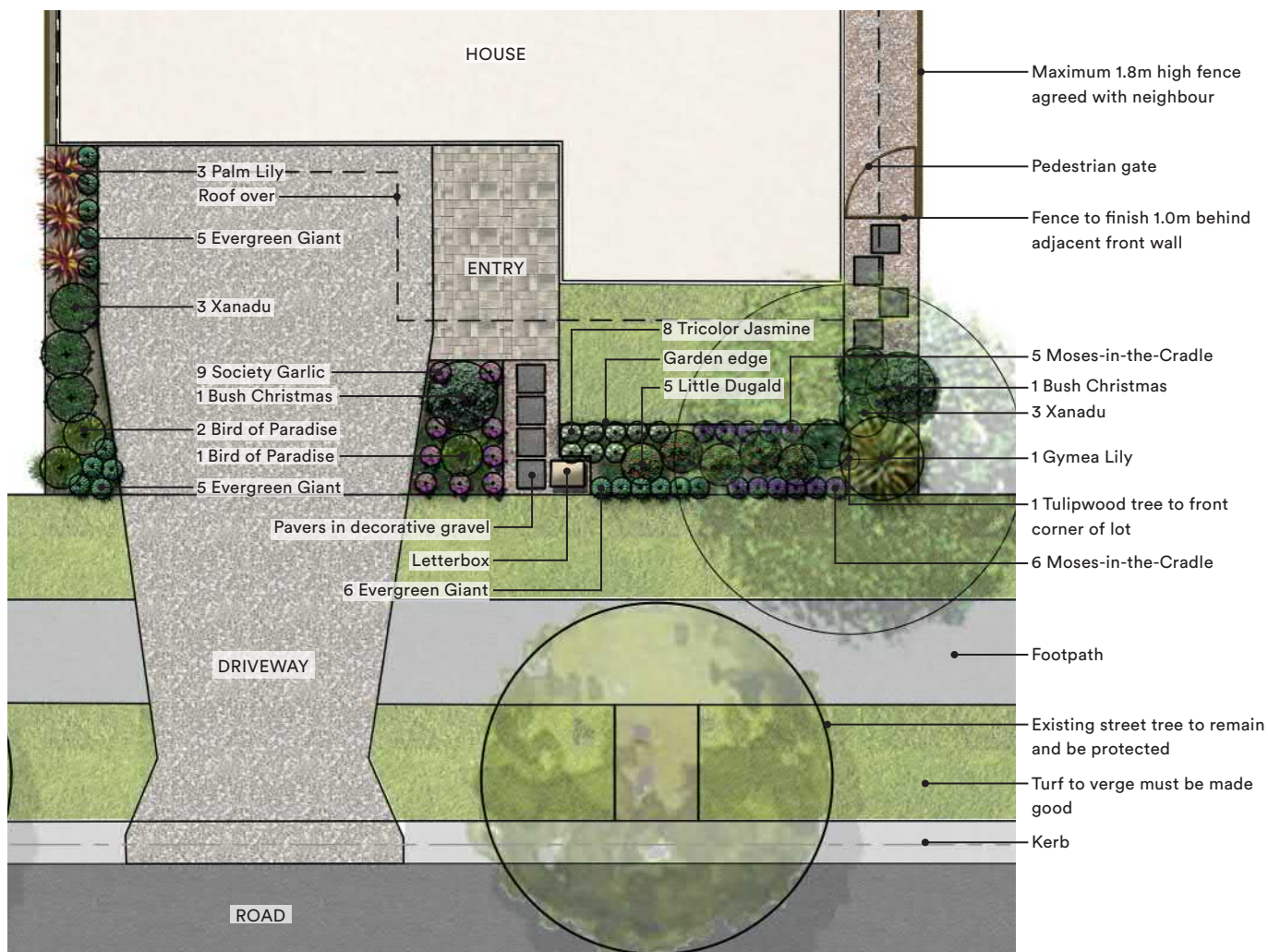


## Garden Style 3: Contemporary Garden

Contemporary garden design is generally modern and functional with multi-purpose spaces, bold structural elements and easy-to-maintain plants which are chosen for their leaf colour or their bold, interesting shapes, rather than flowers.

Shapes and spaces in the garden tend to be simple and geometric with straight lines. Similar to formal gardens, contemporary gardens use repetition of same species of plants to provide strong lines and shapes. This also applies to hard elements such as garden edges or arrangement of pavers.



Garden Style 3: Contemporary Garden on a typical 12.5m wide lot. Refer table below for plant numbers which will change according to lot width and setbacks applied. The plant palette gives an indication of colour, form & textures of trees, shrubs & grasses or groundcovers with a suitable alternative.

Contemporary Garden - Plant Species Tree (T), Shrub (S), Grass or Groundcover (G)	Number of Plants				
	10m lot width*	12.5m lot width	14m lot width	16m lot width	18-20m lot width
Tulipwood (T) OR Riberry (T)	1	1	1	1	1
Gynea Lily (S) OR Bird of Paradise (S)	0	1	1	1	2
Palm Lily (S) OR Red Star (S)	3	3	3	6	6
Bush Christmas (S) OR Nandina 'Obsession' (S)	2	2	3	4	6
Xanadu (S) OR Pink Malay (S)	6	6	9	12	15
Bird of Paradise (S) OR Red Bromeliad (S)	3	3	5	7	7
Little Dugald (S) OR Pink Malay (S)	2	5	7	9	11
Coastal Boobiella (G) OR Tricolor Star Jasmine (G)	4	8	12	16	20
Moses-In-The-Cradle (G) OR Society Garlic (G)	7	11	16	21	26
Evergreen Giant (G) OR Society Garlic (G)	19	25	30	35	40

### Notes:

- For 10m lot width, turf to front garden to be replaced with decorative gravel.
- When planting trees in close proximity of your home it is highly recommended to install a root barrier.
- The number of plants shown above provide optimum visual appeal to the frontage. However the number exceeds the minimum covenant requirement.
- The size and spread of the plants shown on the plans are at maturity/full size.

# Contemporary Garden Plant Palette



Water requirement



Maintenance requirement



Trees



Shrubs



Groundcovers



Full Sun



Partial Sun



Shade



Bee attracting



Bird attracting



Butterfly attracting



**Common Name:** Tulipwood

**Botanical Name:** *Harpullia pendula*  
**Mature size (Height x Spread):** 10.0 x 5.0m  
**Alternative:** Riberry (*Syzygium luehmannii*)



**Common Name:** Gynea Lily

**Botanical Name:** *Doryanthes excelsa*  
**Mature size (Height x Spread):** 4.0 x 3.0m  
**Alternative:** Bird of Paradise (*Strelitzia reginae*)



**Common Name:** Palm Lily

**Botanical Name:** *Cordyline fruticosa* 'Rubra'  
**Mature size (Height x Spread):** 2.5 x 1.0m  
**Alternative:** Red Star (*Cordyline australis* 'Red Star')



**Common Name:** Bush Christmas

**Botanical Name:** *Syzygium* 'Bush Christmas'  
**Mature size (Height x Spread):** 2.0 x 2.0m  
**Alternative:** Nandina Obsession (*Nandina domestica* Seika)



**Common Name:** Xanadu

**Botanical Name:** *Philodendron* 'Xanadu'  
**Mature size (Height x Spread):** 1.0 x 1.0m  
**Alternative:** Pink Malay (*Ixora coccinea* 'Pink Malay')



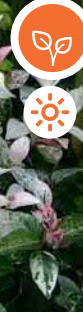
**Common Name:** Bird of Paradise

**Botanical Name:** *Strelitzia reginae*  
**Mature size (Height x Spread):** 0.7x0.7m  
**Alternative:** Red Bromeliad (*Alcantarea imperialis* 'Rubra')



**Common Name:** Little Dugald

**Botanical Name:** *Metrosideros collina* 'Little Dugald'  
**Mature size (Height x Spread):** 1.0 x 1.0m  
**Alternative:** Pink Malay (*Ixora coccinea* 'Pink Malay')



**Common Name:** Coastal Boobialla

**Botanical Name:** *Trachelospermum jasminoides*  
 'Tricolor'  
**Mature size (Height x Spread):** 0.3-x 1.5m  
**Alternative:** Coastal Boobialla (*Myoporum ellipticum*)



**Common Name:** Moses-In-The-Cradle

**Botanical Name:** *Rhoeo discolor*  
**Mature size (Height x Spread):** 0.15-x 0.5m  
**Alternative:** Society Garlic (*Tulbaghia violacea*)



**Common Name:** Evergreen Giant

**Botanical Name:** *Liriope muscari* 'Evergreen Giant'  
**Mature size (Height x Spread):** 0.3-x 0.3m  
**Alternative:** Society Garlic (*Tulbaghia violacea*)