

Elliot Springs Master Plan

Be part of a growing community

There's a lot to love about Elliot Springs. Surrounded by stunning natural bushland, you're only 10 minutes from Fairfield Central and the Murray Sports Complex.

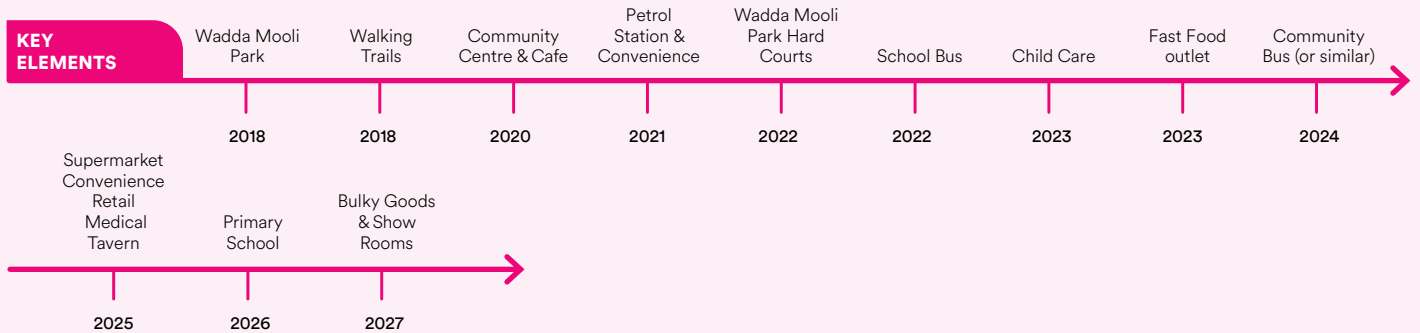
As the Elliot Springs master plan comes to life, so too will the delivery of schools, shopping precincts, sporting grounds and district parks, commercial centres.

Just 15km from the Townsville CBD, Elliot Springs will be the size of Annandale, Aitkenvale, Vincent, Gulliver, and Mundingburra combined, making it Townsville's largest master planned community.

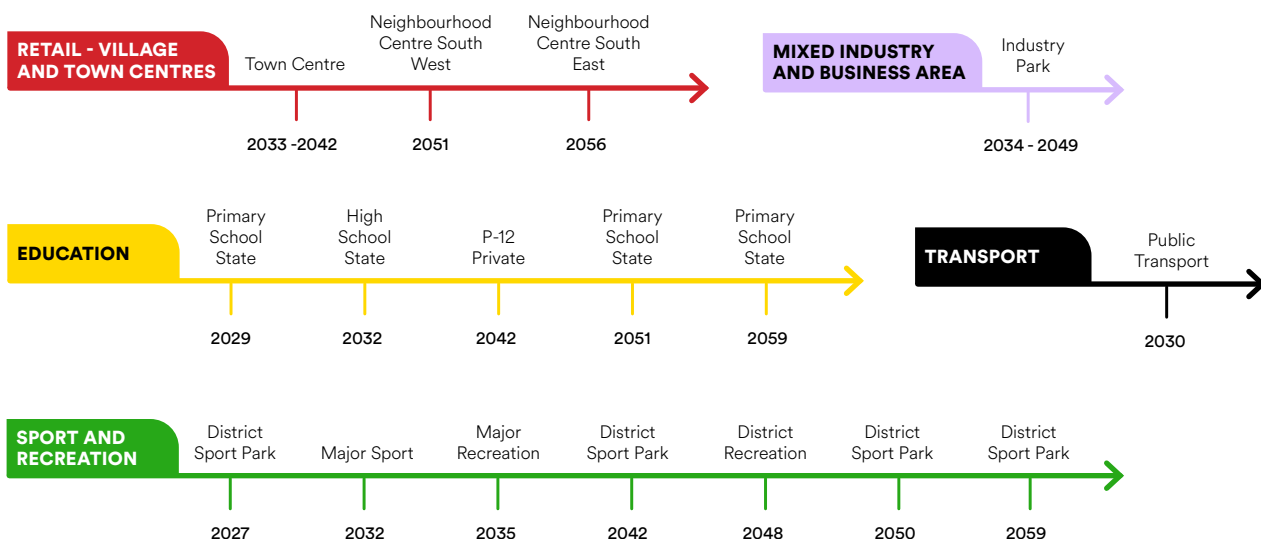
- Townsville CBD 15km
- Fairfield Central & Fairfield Home Maker Centre 11km
- Lavarack Barracks 13.5km
- Townsville Hospital 17km
- James Cook University 18km

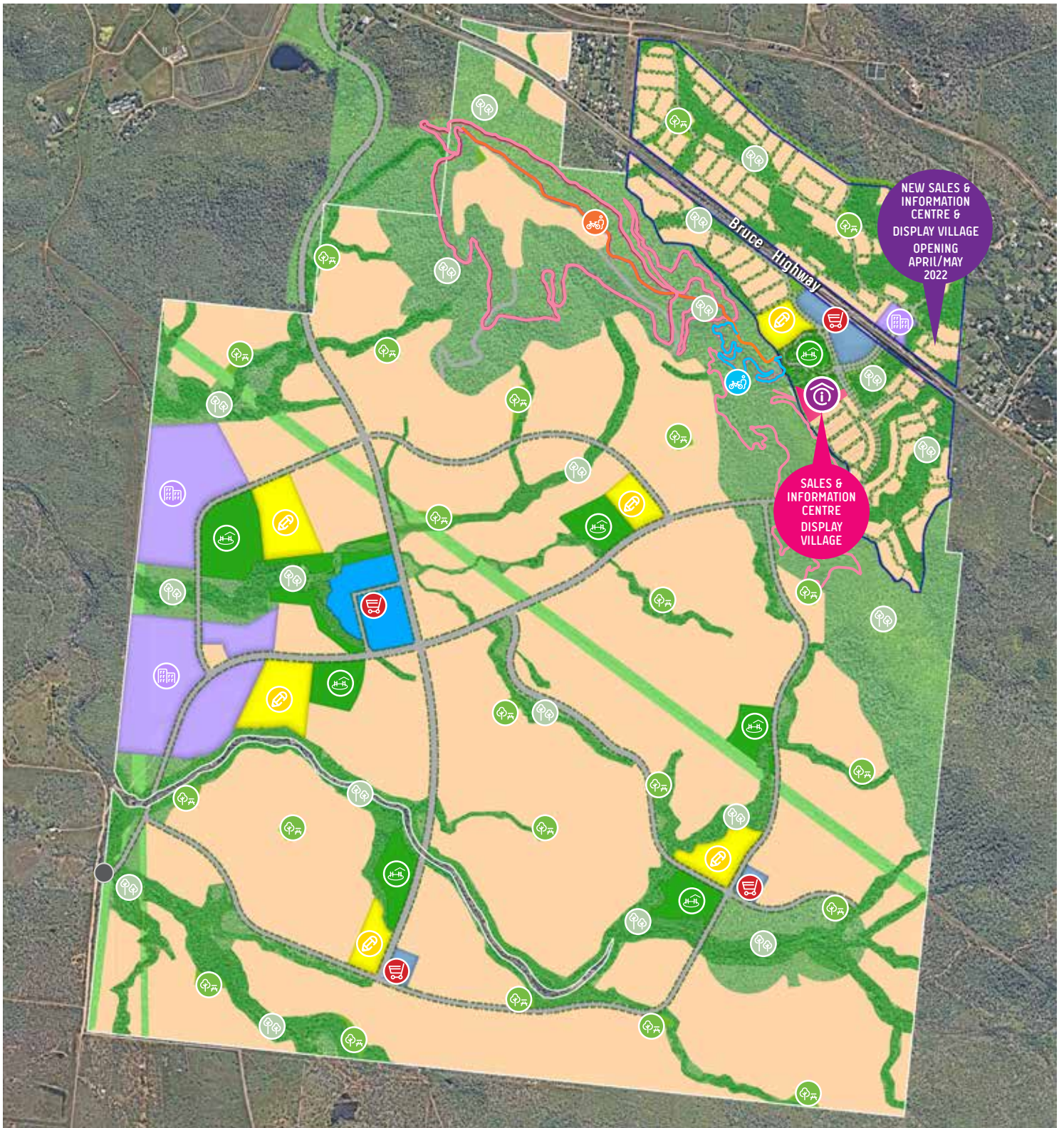
Financial Year	Population Cumulative
2020	196
2025	1,731
2030	5,234
2035	9,033
2040	12,642
2045	16,597
2050	20,615
2055	24,434
2060	28,586
2062	29,769

PRECINCT 1



BALANCE PROJECT





Legend

- | | | |
|-----------------------------------|--------------------------------------|--|
| Sales and Information Centre | Moongun Walking Trail | Education |
| Retail - Village and Town Centres | Goodibun Mountain Bike Trail | Local Retail |
| Mixed Industry and Business Area | Future Hiking & Mountain Bike Trails | Open Space - Conservation |
| Education | Town Centre | Open Space - District |
| Open Space | Residential | Proposed Road |
| Sport and Recreation | Mixed Industry and Business | Possible future access to Flinders Hwy |
| Conservation and Creek Corridors | Commercial Mixed Use | Current Development Area |

Published by Lendlease Communities (Townsville) Pty Limited ACN: 072 714 688. The information in the master plan contains forecasts and predictions about the delivery of key amenity within the Elliot Springs Community and is based on research carried out by Lendlease and its consultants. Although Lendlease has taken care in preparing this information, Lendlease does not make any representation about the forecast provided. The timeframe for delivery of key amenity may vary depending on various factors including market activity. Published April 2021.