

## Garden Style 2: Habitat Garden

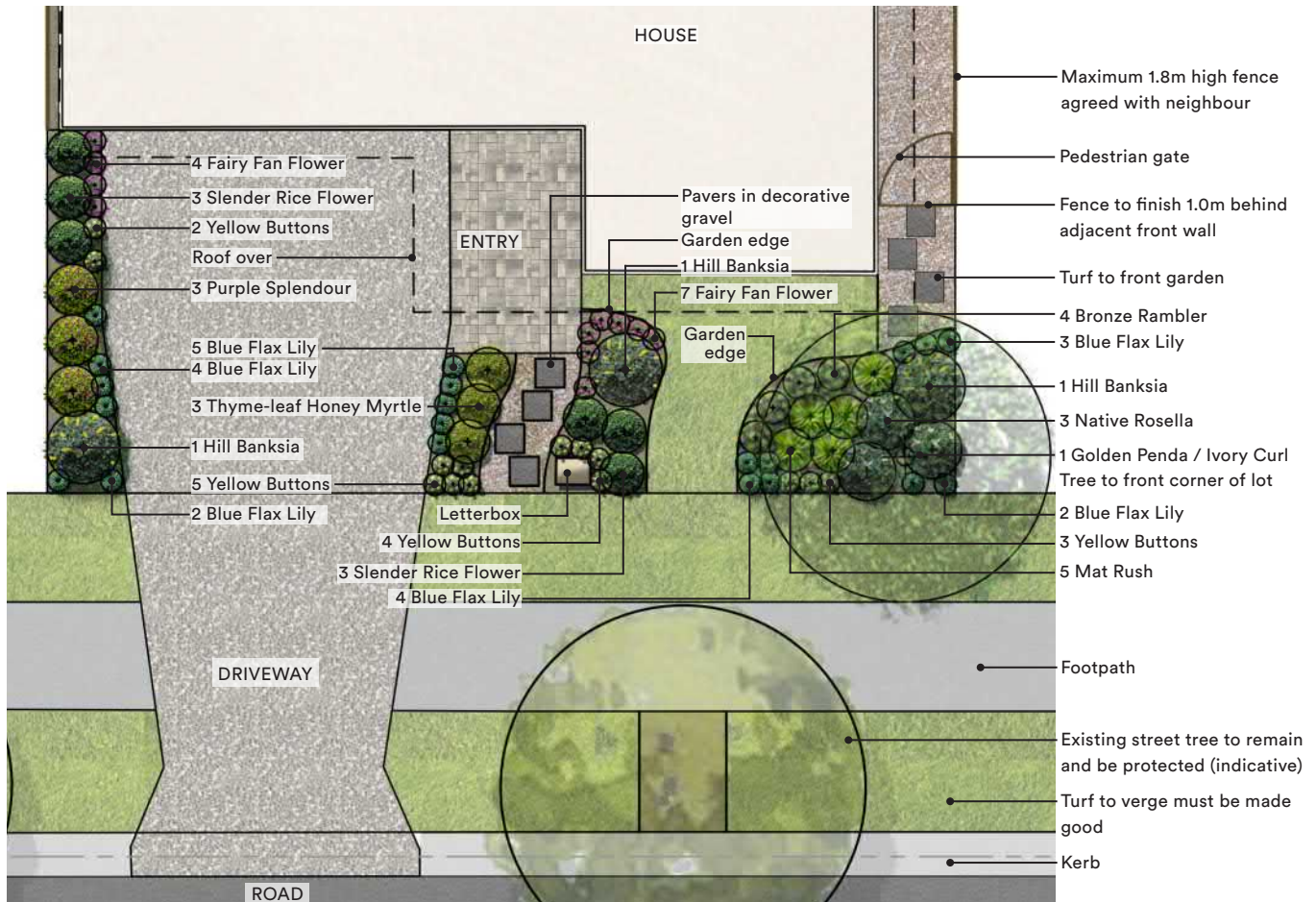
Birds, butterflies and other fauna do not just live in the bush, they also live with us in the suburbs, and contribute to the rich biodiversity of our communities. You can attract them to your garden by providing the right conditions and a safe environment.

### Attract butterflies & birds to your garden

Butterflies are attracted to daisy-type flowers. They prefer a sunny position protected from the wind. Adult butterflies need nectar from flowers to feed on, and

females will lay their eggs on plants that will provide food for their caterpillars.

Plants also provide habitat, protection and food for local birds. But all birds have the same requirements. For example Honeyeaters are nectar and insect feeders and like plants such as Grevilleas, Kangaroo Paws and Banksias. Rosellas and Lorikeets feed on Eucalypt blossoms and seeds. Birds will also be attracted to water. Bird baths should be elevated to shrubs or trees so that birds can escape into the foliage.



Garden Style 2: Habitat Garden on a typical 12.5m wide lot. Refer table below for plant numbers which will change according to lot width and setbacks applied. The plant palette gives an indication of colour, form & textures of trees, shrubs & grasses or groundcovers with a suitable alternative.

Habitat Garden - Plant Species	Number of Plants				
	10m lot width*	12.5m lot width	14m lot width	16m lot width	18-20m lot width
Tree (T), Shrub (S), Grass or Groundcover (G)					
Ivory Curl Tree (T) OR Coastal Banksia (T)	0	0	0	0	1
Golden Penda (T) OR Ivory Curl Tree (T)	1	1	1	1	1
Hill Banksia (S) OR Great Balls of Fire (S)	3	3	5	7	9
Native Rosella (S) OR Callistemon 'Pink Champagne' (S)	2	3	4	5	7
Thyme-leaf Honey-myrtle (S) OR Mat Rush (S)	6	6	6	6	8
Slender Rice Flower (S) OR Murraya 'Min a min' (S)	4	6	6	8	8
Purple Splendour (S) OR Wilderness White (S)	3	3	3	3	3
Yellow Buttons (G) OR Society Garlic (G)	10	13	16	20	24
Kangaroo Vine (G) OR Mat Rush (G)	2	5	5	8	10
Blue Flax Lily (G) OR Silver Lace (G)	16	20	24	28	32
Bronze Rambler (G) OR Cooroora Cascade (G)	2	4	6	8	10
Fairy Fan-flower (G) OR Purple Fusion Fan Flower (G)	11	11	11	13	15

- Notes:
- For 10m lot width, turf to front garden to be replaced with decorative gravel.
  - When planting trees in close proximity of your home it is highly recommended to install a root barrier.
  - The number of plants shown above provide optimum visual appeal to the frontage. However the number exceeds the minimum covenant requirement.
  - The size and spread of the plants shown on the plans are at maturity/full size.

# Habitat Garden Plant Palette



Water requirement



Maintenance requirement



Trees



Shrubs



Groundcovers



Full Sun



Partial Sun



Shade



Bee attracting



Bird attracting



Butterfly attracting



**Common Name:** Ivory Curl Tree

**Botanical Name:** *Buckinghamia celsissima*

**Mature size (Height x Spread):** 8.0 x 5.0m

**Alternative:** Coastal Banksia (*Banksia integrifolia*)



**Common Name:** Golden Penda

**Botanical Name:** *Xanthostemon chrysanthus*

**Mature size (Height x Spread):** 10.0 x 12.0m

**Alternative:** Ivory Curl Tree (*Buckinghamia celsissima*)



**Common Name:** Hill Banksia

**Botanical Name:** *Banksia spinulosa* var. *Collina*

**Mature size (Height x Spread):** 2.5 x 2.5m

**Alternative:** Great Balls of Fire (*Callistemon salignus* 'Great Balls of Fire')



**Common Name:** Native Rosella

**Botanical Name:** *Hibiscus heterophyllus*

**Mature size (Height x Spread):** 2.0 x 1.5m

**Alternative:** Callistemon 'Pink Champagne'

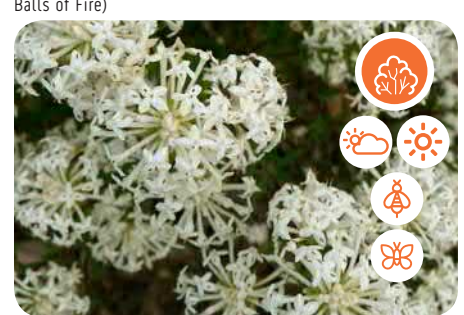


**Common Name:** Thyme-leaf Honey-myrtle

**Botanical Name:** *Melaleuca thymifolia*

**Mature size (Height x Spread):** 1.0 x 1.0m

**Alternative:** Mat Rush (*Lomandra hystrix*)



**Common Name:** Slender Rice Flower

**Botanical Name:** *Pimelea linifolia*

**Mature size (Height x Spread):** 0.4 x 0.5m

**Alternative:** Murraya paniculata 'Min a min'



**Common Name:** Purple Splendour

**Botanical Name:** *Callistemon 'Purple Splendour'*

**Mature size (Height x Spread):** 2.0 x 1.5m

**Alternative:** Callistemon 'Wilderness White'



**Common Name:** Yellow Buttons

**Botanical Name:** *Chrysocephalum apiculatum*

**Mature size (Height x Spread):** 0.15 x 2.5m

**Alternative:** Society Garlic (*Tulbaghia violacea*)



**Common Name:** Kangaroo Vine

**Botanical Name:** *Cissus antarctica*

**Mature size (Height x Spread):** 0.3 x 4.0m

**Alternative:** Mat Rush (*Lomandra hystrix*)



**Common Name:** Blue Flax-Lily

**Botanical Name:** *Dianella caerulea*

**Mature size (Height x Spread):** 0.5 x 0.5m

**Alternative:** Silver Lace (*Tulbaghia violacea* 'Silver Lace')



**Common Name:** Bronze Rambler

**Botanical Name:** *Grevillea 'Bronze Rambler'*

**Mature size (Height x Spread):** 0.4 x 2.0m

**Alternative:** Cooroora Cascade (*Grevillea 'Cooroora Cascade'*)



**Common Name:** Fairy Fan-Flower

**Botanical Name:** *Scaevola aemula*

**Mature size (Height x Spread):** 0.5 x 1.0m

**Alternative:** Purple Fusion Fan-Flower (*Scaevola humilis*)