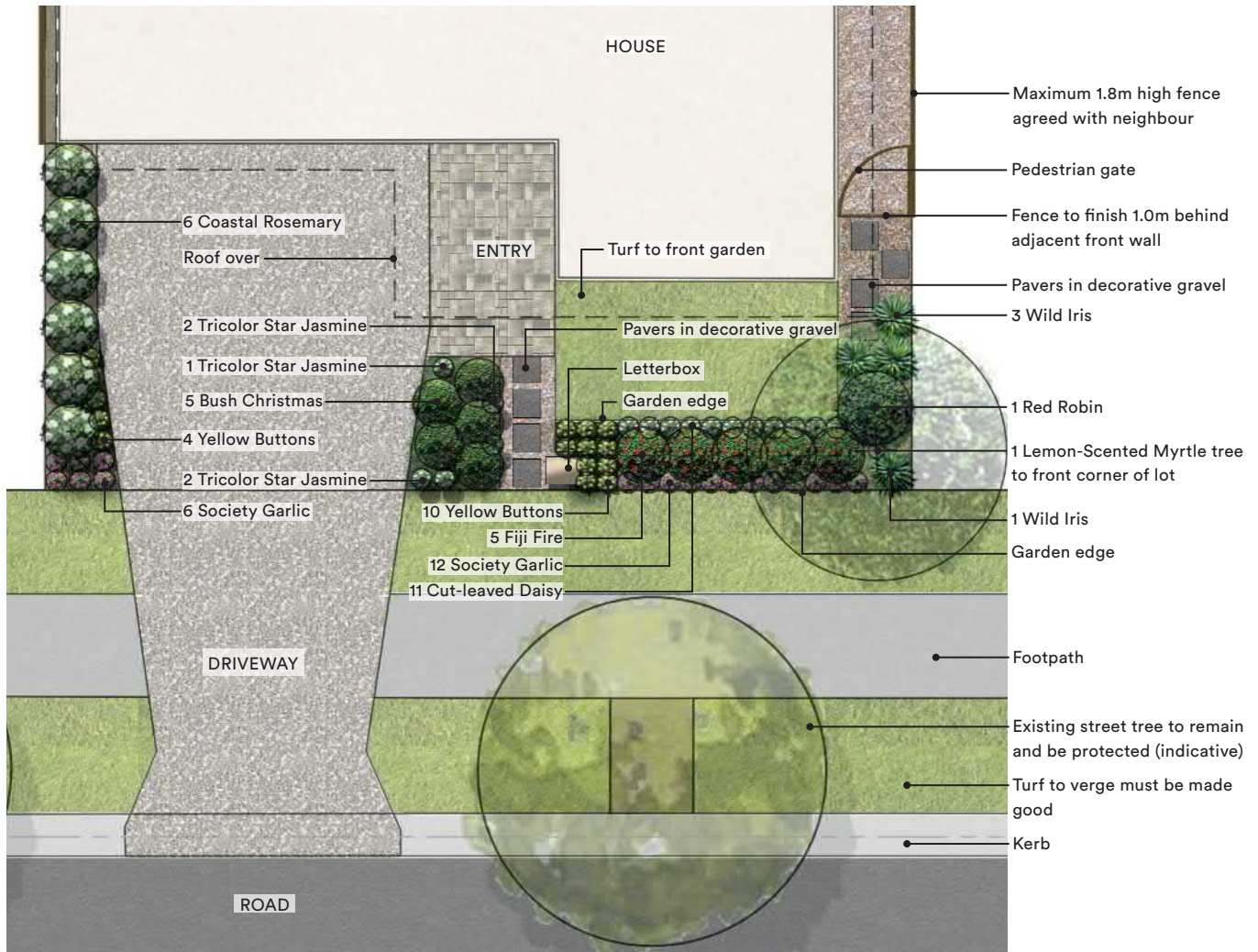


Garden Style 1: Formal Garden

Symmetry, geometry and repetition are crucial to formal garden design as they create balance and a harmonious pattern. Straight lines and a strong central axis are found in most formal designs, with circles and curves laid out with geometric precision. The style is suited to houses with strong formal or geometric features.

Formal gardens usually have a limited palette, with many of the same species in a row or group. Plants are often trimmed to create structure in the garden. Order and control over the garden is critical to the style, so formal gardens require regular maintenance. Choose plants that respond well to clipping and pruning.



Garden Style 1: Formal Garden on a typical 12.5m wide lot. Refer table below for plant numbers which will change according to lot width and setbacks applied. The plant palette gives an indication of colour, form & textures of trees, shrubs & grasses or groundcovers with a suitable alternative.

Formal Garden - Plant Species	Number of Plants				
	10m lot width*	12.5m lot width	14m lot width	16m lot width	18-20m lot width
Lemon-scented Myrtle (T) OR Blueberry Ash (T)	1	1	1	1	2
Bush Christmas Lily Pily (S) OR Red Robin (S)	1	1	1	1	2
Wild Iris (G) OR Tall Sedge (G)	4	4	6	6	6
Fiji Fire (S) OR Wallum Bottlebrush (S)	2	5	7	7	7
Heath Myrtle (S) OR Waterfall Plant (S)	0	0	0	2	4
Coastal Rosemary (S) OR Pink Malay	6	6	6	6	6
Tricolor Star Jasmine (G) OR Coastal Boobiolla	3	5	5	5	8
Cut-Leaved Daisy (G) OR Blue Felcia	4	11	16	16	16
Tall Sedge (G) OR Fine-leaved Mat Rush (G)	0	0	0	4	8
Yellow Buttons (G) OR Society Garlic	11	15	15	15	15
Society Garlic (G) OR Red Kangaroo Paw	13	18	25	30	35

Notes:

- For 10m lot width, turf to front garden to be replaced with decorative gravel.
- When planting trees in close proximity of your home it is highly recommended to install a root barrier.
- The number of plants shown above provide optimum visual appeal to the frontage. However the number exceeds the minimum covenant requirement.
- The size and spread of the plants shown on the plans are at maturity/full size.

Formal Garden Plant Palette



Water requirement



Maintenance requirement



Trees



Shrubs



Groundcovers



Full Sun



Partial Sun



Shade



Bee attracting



Bird attracting



Butterfly attracting



Common Name: Lemon-Scented Myrtle

Botanical Name: *Backhousia citriodora*

Mature size (Height x Spread): 8.0 x 4.0m

Alternative: Blueberry Ash (*Elaeocarpus reticulatus*)



Common Name: Red Robin

Botanical Name: *Photinia fraseri* 'Red Robin'

Mature size (Height x Spread): 2.0 x 1.5m

Alternative: Aussie Compact (*Syzygium australe* 'Aussie Compact')



Common Name: Bush Christmas

Botanical Name: *Syzygium australe* 'Bush Christmas'

Mature size (Height x Spread): 1.5 x 1.5m

Alternative: Red Robin (*Photinia fraseri* 'Red Robin')



Common Name: Fiji Fire

Botanical Name: *Metrosideros vitiensis* 'Fiji Fire'

Mature size (Height x Spread): 2.0 x 2.0m

Alternative: Wallum Bottlebrush (*Melaleuca pachyphylla*)



Common Name: Heath Myrtle

Botanical Name: *Sannantha virgata* 'Miniature'

Mature size (Height x Spread): 1.5 x 1.5m

Alternative: Waterfall Plant (*Phyllanthus multiflorus*)



Common Name: Wild Iris

Botanical Name: *Diets grandiflora*

Mature size (Height x Spread): 1.0 x 1.0m

Alternative: Tall Sedge (*Carex appressa*)



Common Name: Tricolor Star Jasmine

Botanical Name: *Anigozanthos flavidus*

Mature size (Height x Spread): 3.0 x 2.0m

Alternative: Coastal Boobialla (*Myoporum ellipticum*)



Common Name: Cut-Lefted Daisy

Botanical Name: *Brachyscome multifida* var. *multifida*

Mature size (Height x Spread): 0.45x0.45m

Alternative: Blue Felicia (*Felicia amelloides*)



Common Name: Coastal Rosemary

Botanical Name: *Westringia fruticosa* 'Zena'

Mature size (Height x Spread): 1.5 x 1.5m

Alternative: Pink Malay (*Ixora coccinea*)



Common Name: Yellow Buttons

Botanical Name: *Chrysocephalum apiculatum*

Mature size (Height x Spread): 0.15-x 2.5m

Alternative: Society Garlic (*Tulbaghia violacea*)



Common Name: Society Garlic

Botanical Name: *Tulbaghia violacea*

Mature size (Height x Spread): 0.3-x 0.3m

Alternative: Red Kangaroo Paw (*Anigozanthos flavidus*)



Common Name: Tall Sedge

Botanical Name: *Carex appressa*

Mature size (Height x Spread): 0.5-1.0 x 0.5-1.0m

Alternative: Fine-leaved Mat Rush (*Lomandra confertifolia*)