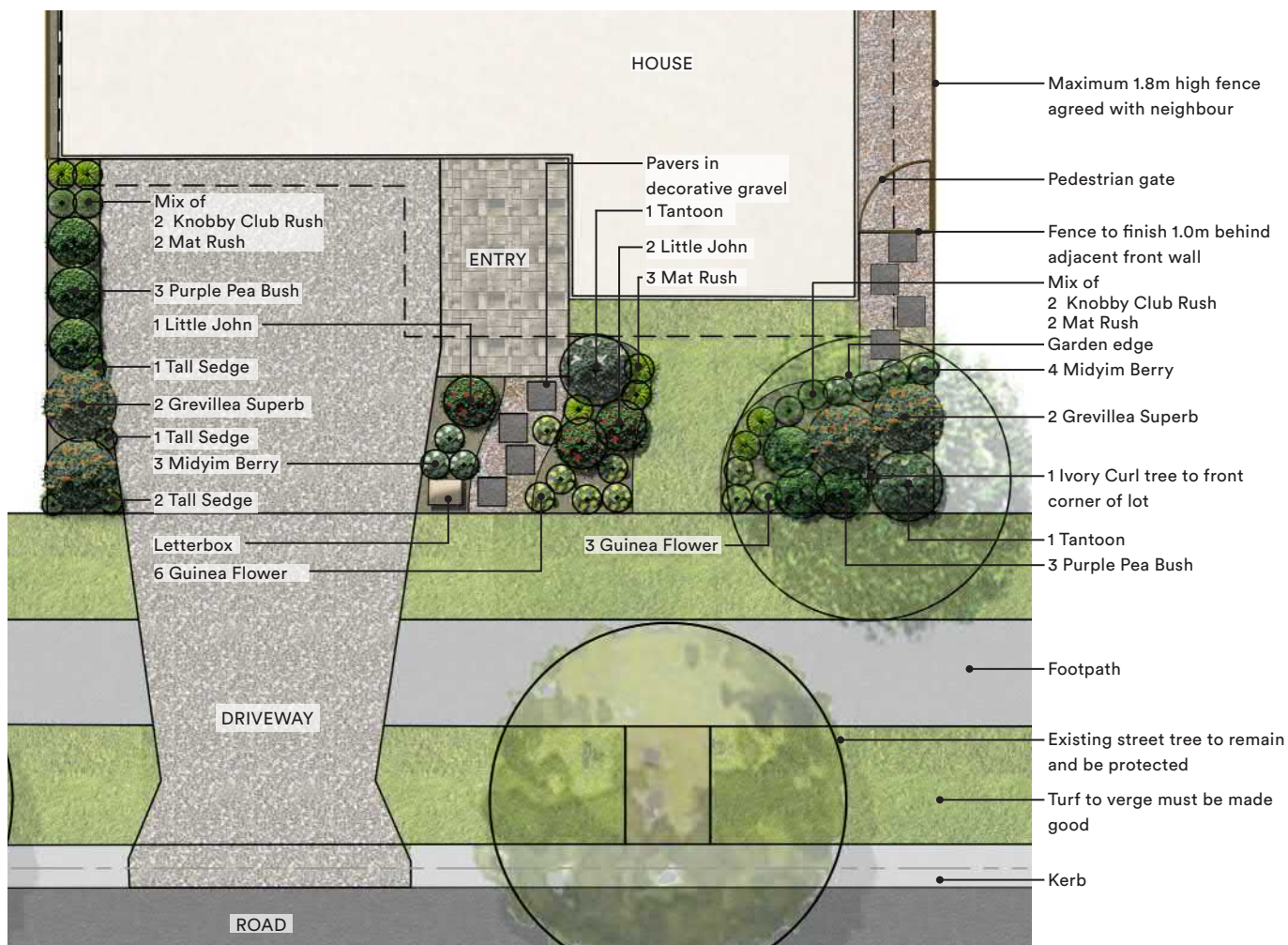


Garden Style 4: Informal Native Garden

An informal native garden utilises native plants with attractive, delicate flowers and has an emphasis on colour. A native garden will also attract wildlife such as birds and butterflies. Choose various plants that will flower at different times to provide year-round interest, as well as nectar-producing flowers (bottle-brushes and grevilleas), seed

plants (wattles and grasses) and materials for building nests (strappy foliage). The garden relies on plants rather than hard landscaping (paving and retaining walls) to provide structure in the garden, so use plants of different heights and form. Areas of lawn are generally minimal.



Garden Style 4: Informal Native Garden on a typical 12.5m wide lot. Refer table below for plant numbers which will change according to lot width and setbacks applied. The plant palette gives an indication of colour, form & textures of trees, shrubs & grasses or groundcovers with a suitable alternative.

Informal Native Garden - Plant Species	Number of Plants				
	10m lot width*	12.5m lot width	14m lot width	16m lot width	18-20m lot width
Tree (T), Shrub (S), Grass or Groundcover (G)					
Ivory Curl Tree (T) OR Red Ash (T)	1	1	1	1	1
Grevillea 'Superb' OR Grevillea 'Robyn Gordon' (S)	3	4	5	6	7
Tantoon (S) OR Syzygium 'Aussie Boomer' (S)	2	2	3	4	5
Purple Pea-Bush (S) OR Melaleuca Claret Tops	4	6	8	10	12
Little John (S) OR Better John (S)	2	3	5	7	9
Tall Sedge (G) OR Astartea 'Winter Pink' (S)	4	4	6	8	10
Midyim Berry (S) OR 'Copper Tops' (S)	5	7	9	11	13
Knobby Club Rush (G) OR Common Rush (G)	2	4	6	8	12
Mat Rush (S) OR River Mat Rush	4	7	9	11	13
Guinea Flower (G) OR Coastal Boobialla (G)	5	9	12	15	18

Notes:

- For 10m lot width, turf to front garden to be replaced with decorative gravel.
- When planting trees in close proximity of your home it is highly recommended to install a root barrier.
- The number of plants shown above provide optimum visual appeal to the frontage. However the number exceeds the minimum covenant requirement.
- The size and spread of the plants shown on the plans are at maturity/full size.

Informal Native Garden Plant Palette



Water requirement



Maintenance requirement



Trees



Shrubs



Groundcovers



Full Sun



Partial Sun



Shade



Bee attracting



Bird attracting



Butterfly attracting



Common Name: Ivory Curl Tree

Botanical Name: *Buckinghamia celsissima*
Mature size (Height x Spread): 8.0 x 5.0m
Alternative: Red Ash (*Alphitonia excelsa*)



Common Name: Grevillea Superb

Botanical Name: *Grevillea Superb*
Mature size (Height x Spread): 2.0 x 2.0m
Alternative: Robyn Gordon (*Grevillea 'Robyn Gordon'*)



Common Name: Tantoon

Botanical Name: *Leptospermum polygalifolium*
Mature size (Height x Spread): 3.0 x 2.0m
Alternative: Aussie Boomer (*Syzygium 'Aussie Boomer'*)



Common Name: Purple Pea Bush

Botanical Name: *Hovea acutifolia*
Mature size (Height x Spread): 1.5 x 1.0m
Alternative: Claret Tops (*Melaleuca 'Claret Tops'*)



Common Name: Little John

Botanical Name: *Callistemon 'Little John'*
Mature size (Height x Spread): 0.9 x 0.3m
Alternative: Better John (*Callistemon 'Better John'*)



Common Name: Tall Sedge

Botanical Name: *Carex appressa*
Mature size (Height x Spread): 0.5 x 0.5m
Alternative: Astartea Winter Pink (*Baeckea astarteoides*)



Common Name: Midyim Berry

Botanical Name: *Austromyrtus dulcis*
Mature size (Height x Spread): 0.7 x 1.0m
Alternative: Copper Tops (*Austromyrtus 'Copper Tops'*)



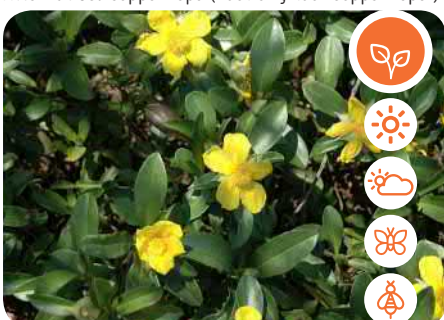
Common Name: Knobby Club Rush

Botanical Name: *Ficinia nodosa* (formerly *Isolepis*)
Mature size (Height x Spread): 1.0 x 0.8m
Alternative: Common Rush (*Juncus usitatus*)



Common Name: Mat Rush

Botanical Name: *Lomandra hystrix*
Mature size (Height x Spread): 1.5 x 1.5m
Alternative: River Mat Rush (*Lomandra longifolia*)



Common Name: Guinea Flower

Botanical Name: *Hibbertia scandens*
Mature size (Height x Spread): 1.0 x 3.0m
Alternative: Coastal Boobialla (*Myoporum ellipticum*)